



Pacific Hoists

QUALITY LIFTING SOLUTIONS

Pacific My-T-Lift



24 Foundry Rd, Seven Hills NSW 2147 Australia | P +61 2 8825 6900

Pacific Hoists PTY LTD | www.pacifichoists.com.au



Pacific My-T-Lift

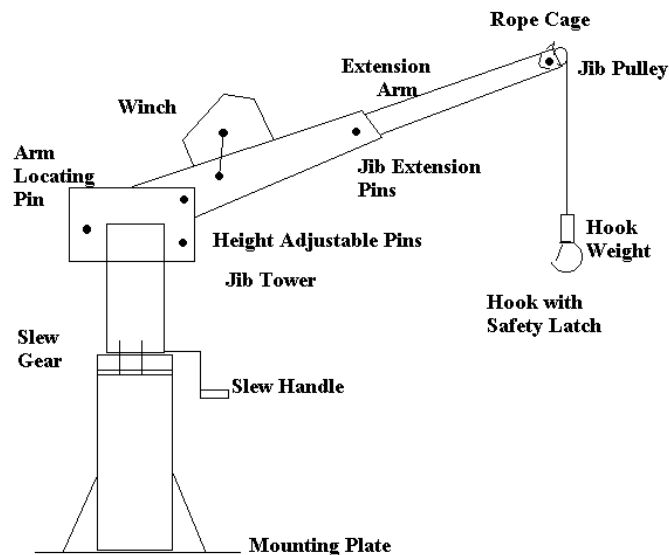
Operating Instructions

WARNING: The information provided is only a guide.

Pacific Hoists Pty Ltd encourages the services of an engineer to be engaged to determine if the MY-T-LIFT is suitable for the application and the structure of the vehicle is able to maintain the weight of the product and maximum lift capacity.

A) BEFORE USING THE MY-T-LIFT

- Ensure that the vehicle (if unit is vehicle mounted) is stable, on a level surface.
- Ensure that all mounting bolts are secure.
- Ensure that the slew gear is correctly lubricated.
- Check the wire rope for any wear or fraying etc. (Do not operate if the rope appears to be damaged in any way).
- Check that the Jib Arm securing pins are in place and are fitted with the safety pins.
- Check that the Jib Pulley is rotating freely.
- Ensure that the Safety Catch is operational on the hook.



B) LIFTING A LOAD

Determine the weight of the item to be lifted and adjust the Jib Arm to the correct position, as per the diagram on the side of the unit. (Note the maximum load should not be exceeded). Ensure that there is sufficient room for the load to be moved to its desired location, i.e remove any obstacles.

- Sling the load in accordance with all applicable standards or specific requirements.
- Operate the winch to lift the load a small distance and double check the stability of the vehicle (if applicable) before lifting fully.
- At all times, ensure that bystanders are at a safe distance. Operate the slew handle slowly to ensure that the load moves steadily.

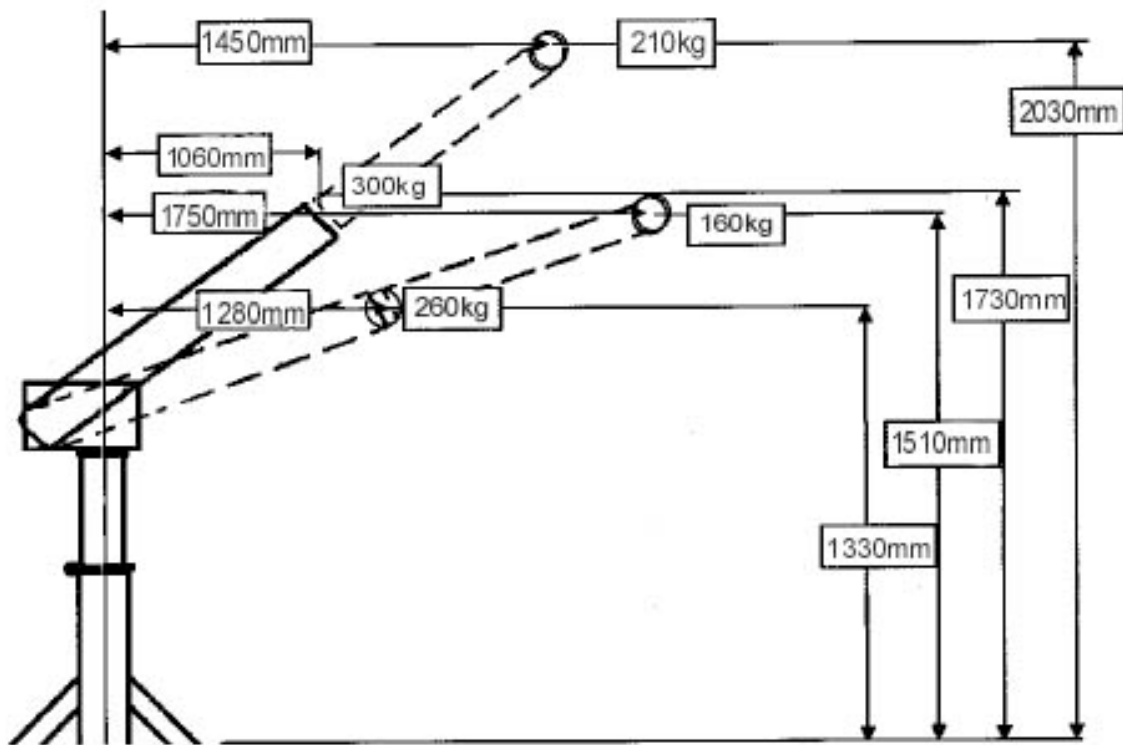
C) SAFETY

- The MY-T-LIFT is designed for lifting goods up to a maximum of 300kg.
- NEVER lift human cargo with the MY-T-LIFT
- The MY-T-LIFT must only be operated by persons who are competent, trained correctly and have read this manual.
- NEVER fit a winch to the MY-T-LIFT which is not of the same design or type as that which is fitted by PACIFIC HOISTS. Refer to winch instructions.
- Always inspect all ropes, slings, hooks etc. before operating.
- Keep bystanders at a safe distance when operating.
- NEVER stand under a suspended load.
- When not in use, the hook must be secured and the Jib Arm rotated so it remains in the vehicle.
- NEVER leave a suspended load unattended.
- NEVER exceed the maximum load stated for each position of the Jib Arm.
- NEVER travel with a suspended load.



D) MAINTENANCE

- Regular check all bolts & pins (including safety pins) for signs of wear.
- Replace any worn or damaged part immediately.
- Regularly lubricate the slew & worm drive with a good quality multi-purpose grease.
- Regularly check the operation of the Jib Pulley.
- Regularly check wire rope and hook. Damaged wire rope must be replaced immediately.
- For winch maintenance (manual/electric) refer to operators manual.



For more information please contact,

Australia +61 2 8825 6900

New Zealand +64 9 263 5566

MY-T-LIFT BASE PLATE DIMENSIONS

